



PETTITI GIUSEPPE s.p.a.

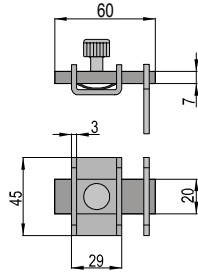
## SERIE ACCESSORI

CHIUSURE ED ACCESSORI

LOCKINGS AND ACCESSORIES

FERMETURES ET ACCESSOIRES

### CHIAVISTELLO PESANTE A SALDARE IN ACCIAIO ZINCATO

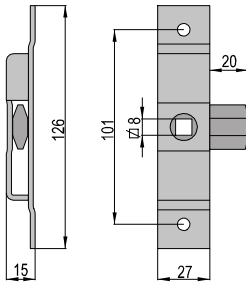


Small bolt to weld, in zinked steel.

Verrou lourd, en acier zingué.

ART.	Confez. Box	Peso Kg Weight
C57	20	0,150

### CHIAVISTELLO A SCATTO IN ACCIAIO ZINCATO

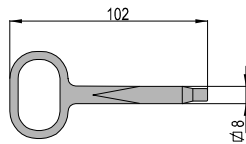


Spring bolt, in zinked steel.

Verrou à déclencher, en acier zingué.

ART.	Confez. Box	Peso Kg Weight
CS8	20	0,140

### CHIAVE PER CHIAVISTELLO A SCATTO



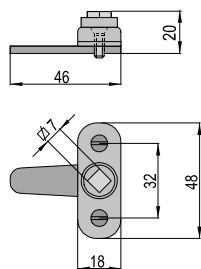
Chiave per chiavistello a scatto (art. CS8).

Bolt key (art. CS8).

Cléf pour verrou (art. CS8).

ART.	Confez. Box	Peso Kg Weight
CCS8	20	0,020

### TAVELLINO PER SPORTELLI



Latch for flap doors, with screws.

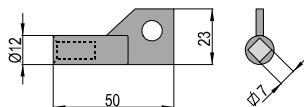
Clenchè pour volets.

T7	Acciaio zincato Zinked steel Acier zingué
T7/INOX	Acciaio inox Stainless steel Acier inox

ART.	Confez. Box	Peso Kg Weight
T7	50	0,046
T7/INOX	50	0,041

INOX - STAINLESS

### CHIAVE PER TAVELLINO



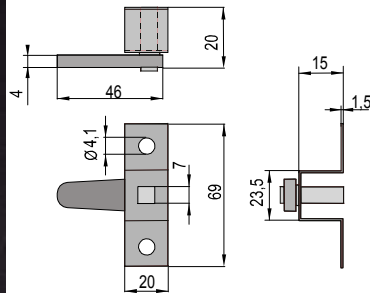
Chiave per tavellino (art. T7, TS7).

Key for latch (art. T7, TS7).

Cléf pour clenchè (art. T7, TS7).

ART.	Confez. Box	Peso Kg Weight
CT7	50	0,010

## TAVELLINO PER SPORTELLI IN ACCIAIO ZINCATO, A SALDARE

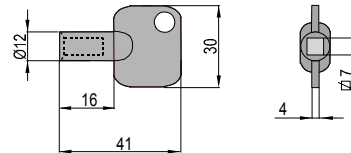


Latch for flap doors, in zinked steel, to be welded.

Clenché pour volets, en acier zingué, à souder.

ART.	Confez. Box	Peso Kg Weight
TS7	50	0,043

## CHIAVE PER TAVELLINO, IN PLASTICA



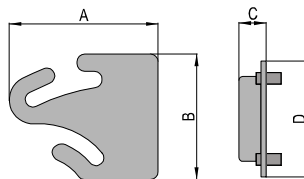
Chiave in plastica per tavellino (art. T7, TS7).

Key for latch, in plastic (art. T7, TS7).

Cléf pour clenché en plastique (art. T7, TS7).

ART.	Confez. Box	Peso Kg Weight
CTS7	50	0,004

## CERNIERA WASISTAS



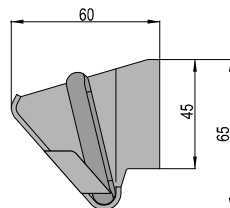
ART.	A	B	C	D
CW65	75	66	14	60
CW85	92	87	11	79

Wasistas hinge, in steel.

Charnière Wasistas, en acier.

ART.	Confez. Box	Peso Kg Weight
CW65	20	0,105
CW85	20	0,150

## CERNIERA WASISTAS A SALDARE VERSIONE (DX E SX)

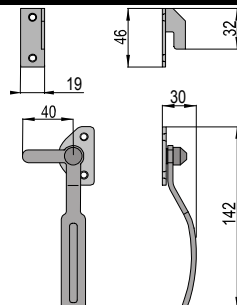


Wasistas hinge to be welded, right and left version.

Charnière Wasistas à souder, version droite et gauche.

ART.	Confez. Box	Peso Kg Weight
CWDS	10 coppie (1Dx + 1Sx)	x coppia 0,140

## MANIGLIA DI BLOCCO ZINCATA E CROMATA



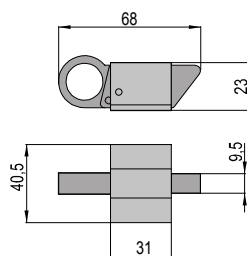
Blocking handle zinc-chrome plated, right and left version.

Poignée de blocage, en acier zingué et chromé, version droite et gauche.

MB/S	Versione sinistra Left version	
MB/D	Versione destra Right version	

ART.	Confez. Box	Peso Kg Weight
MB/S	12	0,120
MB/D	12	0,120

## CRICCHETTO MEDIO PER SOPRALUCI A PACCHETTO IN ACCIAIO

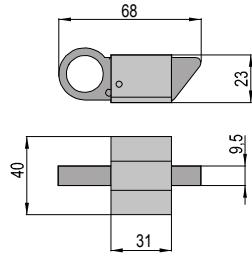


Medium size catche for upper window, in steel, with lamellaire movable central part.

Cliquet moyen pour fenêtres, en acier, partie centrale mobile.

ART.	Confez. Box	Peso Kg Weight
C75	60	0,098

## CRICCHETTO MEDIO PER SOPRALUCI A PACCHETTO IN ACCIAIO



Medium side catch for upper window, in steel, with movable central part.

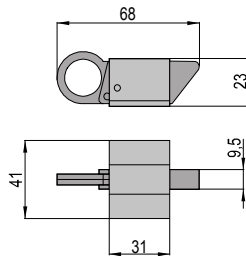
Cliquet moyen pour fenêtres, en acier, partie centrale mobile.

ART.	Confez. Box	Peso Kg Weight
<b>C65</b>	50	0,070

## CRICCHETTO MEDIO PER SOPRALUCI A PACCHETTO IN INOX



INOX - STAINLESS

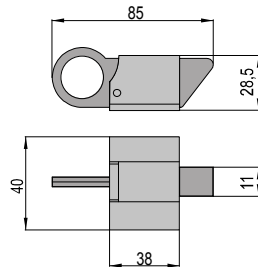


Medium size catche for upper window, in stainless steel.

Cliquet moyen pour fenêtres, en acier inox, partie centrale mobile.

ART.	Confez. Box	Peso Kg Weight
<b>C75/INOX</b>	60	0,096

## CRICCHETTO GIGANTE PER SOPRALUCI A PACCHETTO IN ACCIAIO

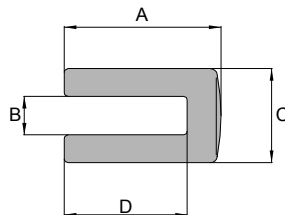


Big size catche for upper window, in steel, with lamellaire movable central part.

Cliquet grand pour fenêtres, en acier, partie centrale mobile lamellaire.

ART.	Confez. Box	Peso Kg Weight
<b>C87</b>	40	0,146

## PIASTRINA APERTA IN ACCIAIO PER CRICCHETTO MEDIO



<b>PC16</b>	Per articolo C75 For items C75 Pour articles C75
<b>PC21</b>	Per articolo C87 For item C87 Pour article C87

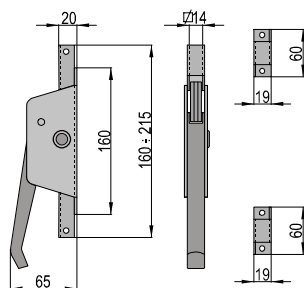
ART.	A	B	C	D
<b>PC16</b>	65	16	40	51
<b>PC21</b>	66	21	45	51

Open strike in steel, for medium catches

Platine ouverte en acier, pour cliquets moyens.

ART.	Confez. Box	Peso Kg Weight
<b>PC16</b>	50	0,030
<b>PC21</b>	60	0,030

## CARIGLIONI A LEVA A DOPPIA AZIONE IN ACCIAIO ZINCATO



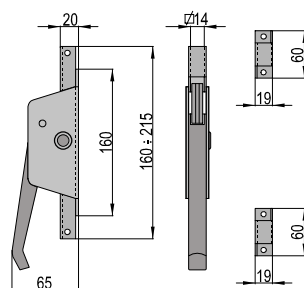
Lever bolt double action, in zinked steel

Crémone à levier à double action en acier zingué.

<b>CAR/Z</b>	Versione senza chiusura Version without locking Version sans fermeture
--------------	--

ART.	Confez. Box	Peso Kg Weight
<b>CAR/Z</b>	5	0,880

## CARIGLIONE A LEVA A DOPPIA AZIONE A SALDARE ZINCATO

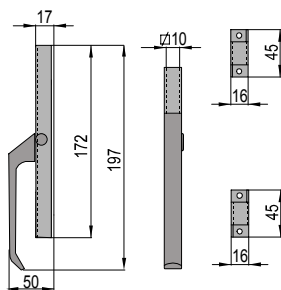


Lever bolt double action, in zinked steel.

Crémone à levier à double action en acier zingué.

ART.	Confez. Box	Peso Kg Weight
<b>CAR/N</b>	5	0,940

## CARIGLIONE A LEVA A DOPPIA AZIONE COLOR NERO

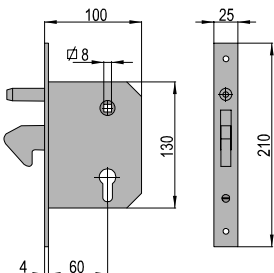


Black lever bolt double action, in zinked steel, black varnished, with guide bars, pins, screws. To be welded.

Crémone a leviero a doppia azione en acier zingué. Version a souder.

ART.	Confez. Box	Peso Kg Weight
CAR/C	8	0,358

## SERRATURE A GANCIO A SAGOMA EUROPEA CON PERNO



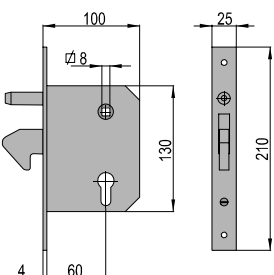
Hook lock with pin, in zinked steel. European profile slip off cylinder 54 mm in brass, 3 keys and fixing screw.

Serrure à crochet avec pivot, en acier zingué. Cylindre profil européen, à enlever 54 mm en laiton, avec 3 clés et vis de fixation.

ART.	Confez. Box	Peso Kg Weight
S102/60	8	0,358

ART.	Confez. Box	Peso Kg Weight
S102/60	12	1,235

## SERRATURE A GANCIO A SAGOMA EUROPEA CON PERNO



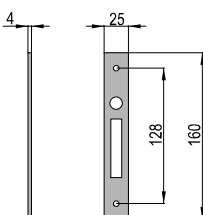
Hook lock with pin, in zinked steel.

Serrure à crochet avec pivot, en acier zingué.

ART.	Confez. Box	Peso Kg Weight
S102/60E	12	1,235

ART.	Confez. Box	Peso Kg Weight
S102/60E	12	1,235

## CONTROPIASTRA IN ACCIAIO ZINCATO PER SERRATURE



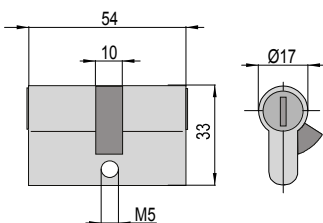
Contropiastra in acciaio zincato, per serrature (art. S102/60).

Counter-plate in zinked steel, for lock (art. S102/60).

Contre-platine en acier zingué, pour serrure (art. S102/60).

ART.	Confez. Box	Peso Kg Weight
CS102/60	24	0,100

## CILINDRO IN OTTONE PER SERRATURA, CON TRE CHIAVI

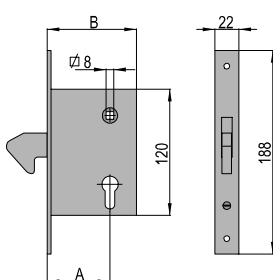


Cylinder in brass, 3 keys and fixing screw.

Cylindre en laiton, avec 3 clés et vis de fixation.

ART.	Confez. Box	Peso Kg Weight
C54C	12	0,190

## SERRATURA A GANCIO A SAGOMA EUROPEA CON CILINDRO



Cilindro sfilabile da 54 mm in ottone, con 3 chiavi e viti di fissaggio.

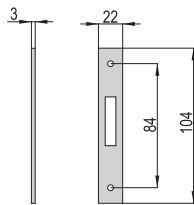
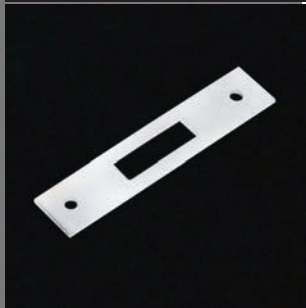
Hook lock, in zinked steel. European profile slip off cylinder 54 mm in brass, 3 keys and fixing screw.

Serrure à crochet, en acier zingué. Cylindre profil européen, à enlever 54 mm en laiton, avec 3 clés et vis de fixation.

ART.	Confez. Box	Peso Kg Weight
S102/30	12	0,585
S102/35	12	0,600
S102/40	12	0,620
S102/45	12	0,640
S102/50	12	0,655

ART.	A	B	ART.	A	B
S102/30	30	56	S102/45	45	71
S102/35	35	61	S102/50	50	76
S102/40	40	66			

## CONTROPIASTRA IN ACCIAIO ZINCATO PER SERRATURE



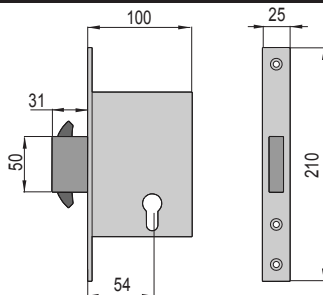
Contropiastra in acciaio zincato, per serrature (art. S102/30, S102/35, S102/40, S102/45, S102/50, S102/60SP).

Counter-plate in zinked steel, for lock (art. S102/30, S102/35, S102/40, S102/45, S102/50, S102/60SP).

Contre-platine en acier zingué, pour serrure (art. S102/30, S102/35, S102/40, S102/45, S102/50, S102/60SP).

ART.	Confez. Box	Peso Kg Weight
<b>CS102</b>	24	0,045

## SERRATURA A DOPPIO GANCIO PER CANCELLI AUTOMATIZZATI



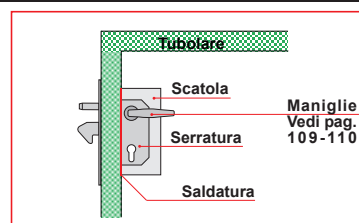
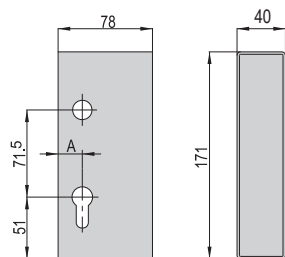
Serratura con doppio gancio antistrappo a scomparsa, in acciaio zincato.

Lock double hook for automatised gates, in zinked steel.

Serrure double crochet pour portails automatisés, en acier zingué.

ART.	Confez. Box	Peso Kg Weight
<b>S102/54AE</b>	12	0,760

## SCATOLA COPRISERRATURA IN ACCIAIO ZINCATO



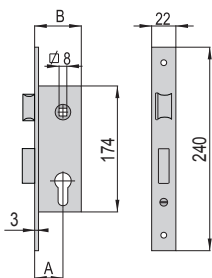
Cover-lock box, in zinked steel.

Boîte couvre serrure, en acier zingué.

ART.	A
<b>SSA</b>	20
<b>SSB</b>	10

ART.	Confez. Box	Peso Kg Weight
<b>SSA</b>	10	0,580
<b>SSB</b>	10	0,580

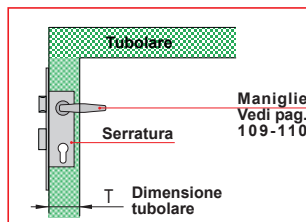
## SERRATURA PER CANCELLI A BATTENTE CON CILINDRO



Lock for swing gate.

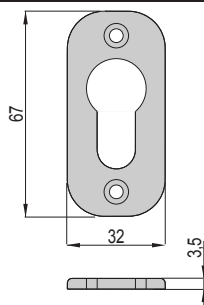
Serrure pour portails à battant avec cylindre.

Con cilindro e 3 chiavi With cylinder and 3 keys  
Avec cylindre et 3 clés



ART.	A	B	T	Confez. Box	Peso Kg Weight
<b>S174/40</b>	21	33	40x40	12	0,660
<b>S174/45</b>	25	40	45x45	12	0,550
<b>S174/50</b>	30	45	50x50	12	0,700

## MOSTRINA COPRICILINDRO



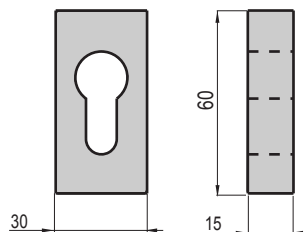
Mostrina copricilindro in plastica nera.

Cover-cylinder in black plastic.

Couvre-cylindre en plastique noire.

ART.	Confez. Box	Peso Kg Weight
<b>MCC67</b>	24	0,005

## MOSTRINA COPRICILINDRO, A SALDARE, IN ACCIAIO GREZZO



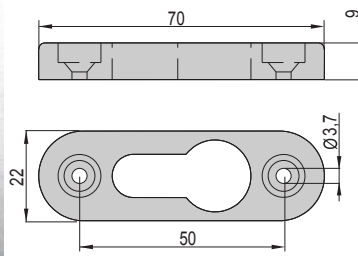
Mostrina/defender copricilindro, a saldare, in acciaio grezzo.

Cover cylinder to weld in raw steel.

Couvre-cylindre, à souder, en acier zingué.

ART.	Confez. Box	Peso Kg Weight
<b>MCC60/15</b>	24	0,161

## MOSTRINA COPRICILINDRO, IN ALLUMINIO



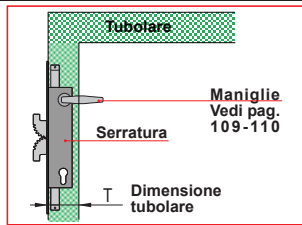
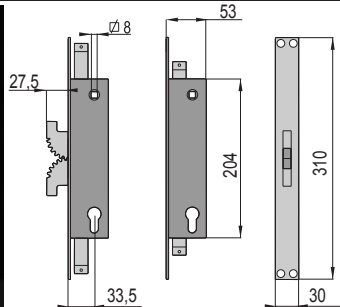
<b>MCC70/N</b>	Verniciata nera Black varnished Verniée noir
<b>MCC70/AL</b>	Verniciata color alluminio Aluminium varnished Verniée aluminium
<b>MCC70/G</b>	Grezza Rough Brut

Mostrina copricilindro in alluminio.  
Cover-cylinder in aluminium.  
Couvre-cylindre en aluminium.

ART.	Confez. Box	Peso Kg Weight
<b>MCC70/N</b>	10	0,024
<b>MCC70/AL</b>	10	0,024
<b>MCC70/G</b>	10	0,024

**NOVITÀ - NEW NOUVEAU**

## SERRATURA DI SICUREZZA PER INFERRIATE CON CONTROPIASTRA



<b>S204/33</b>	Acciaio zincato - Zinked steel Acier Zingue
<b>S204/33/INOX</b>	Acciaio inox - Stainless steel Acier inox

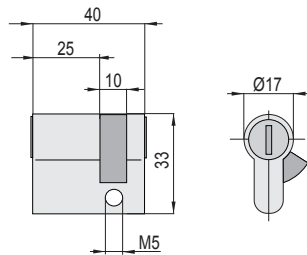
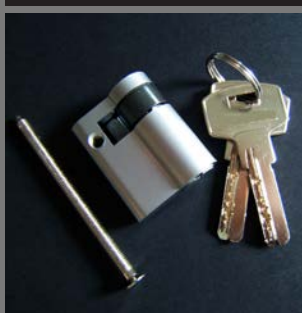
Lock for grilles.  
Serrure pour grilles.

**Brevettata - Patented BUNKERLOCKS**

ART.	T	Confez. Box	Peso Kg Weight
<b>S204/33</b>	60x40	12	0,962
<b>S204/33/INOX</b>	60x40	12	0,962

**INOX - STAINLESS**

## MEZZO CILINDRO IN OTTONE



Mezzo cilindro di sicurezza 30/10, in ottone cromo satinato. Con due chiavi, vite di fissaggio.

Half safety cylinder 30/10 in brass plated satinny. With 2 keys and set screw.

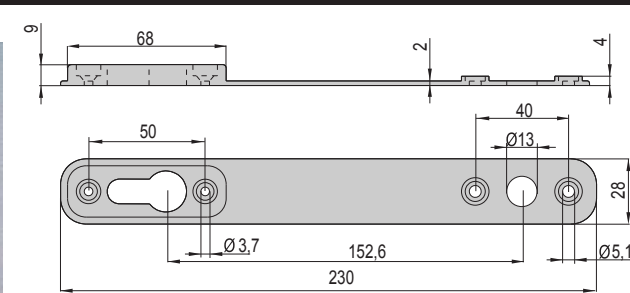
Moitié cylindre de sûreté 30/10 en laiton brossé chromé. Avec 2 clés et vis de fixation.

**NOVITÀ - NEW NOUVEAU**

<b>C30/10U</b>	Chiave unica Unique key Clé unique
----------------	--

ART.	Confez. Box	Peso Kg Weight
<b>C30/10</b>	12	0,133
<b>C30/10U</b>	12	0,133

## MOSTRINA SERRATURA-MANIGLIA PER SERRATURA BUNKERLOCKS



Mostrina in alluminio verniciato nero, per serrature S204/33 e S204/33/INOX e per maniglie della serie M102B.

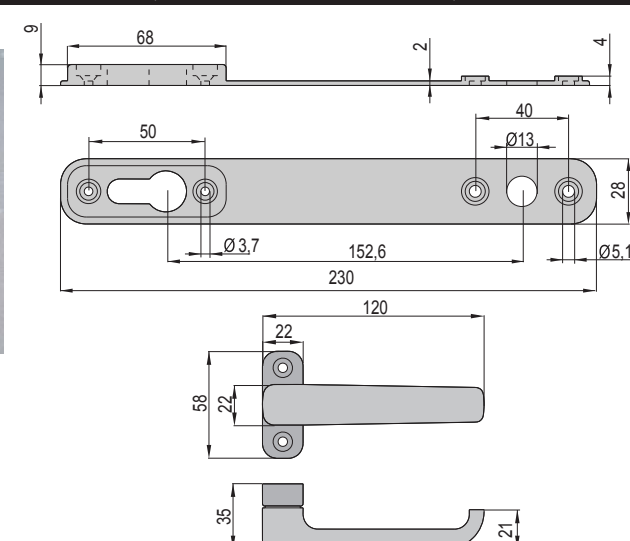
Black painted aluminium badge for locks S204/33 and S204/33/INOX et for handles of series M102B.

Écousson en aluminium, verni noir, pour serrures S204/33 et S204/33/INOX et pour poignées de la série M102B.

**NOVITÀ - NEW NOUVEAU**

ART.	Confez. Box	Peso Kg Weight
<b>MCC230</b>	10	0,046

## MOSTRINA SERRATURA, CON MANIGLIA, PER SERRATURA BUNKERLOCKS



Mostrina in alluminio verniciato nero, per serrature S204/33 e S204/33/INOX, con maniglia in alluminio verniciato nero M102BN70.

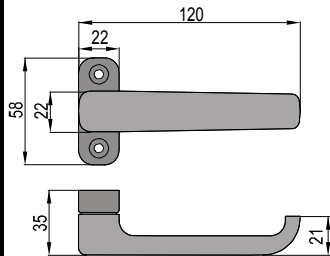
Black painted aluminium badge for locks S204/33 and S204/33/INOX with black painted aluminium handle M102BN70.

Écousson en aluminium, verni noir, pour serrures S204/33 et S204/33/INOX avec poignée en aluminium verni noir M102BN70.

**NOVITÀ - NEW NOUVEAU**

ART.	Confez. Box	Peso Kg Weight
<b>MMCC230</b>	10	0,150

## MEZZA MANIGLIA IN ALLUMINIO PER PERSIANE BLINDATE



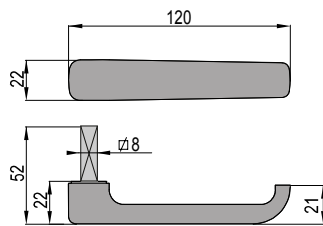
<b>M102BN70</b>	Verniciata nera Black varnished Verniée noir RAL9005
<b>M102B70/B</b>	Verniciata bianca White varnished Verniée blanc RAL9010
<b>M102B70/M</b>	Verniciata marrone Brown varnished Verniée brun RAL8017
<b>M102B70/V</b>	Verniciata verde Green varnished Verniée vert RAL6005
<b>M102B70/A</b>	Verniciata argento Silver varnished Verniée argent

Average handle in aluminium for armored blinds.

Demie poignée en aluminium pour persiennes blindées.

ART.	Confez. Box	Peso Kg Weight
<b>M102BN70</b>	10	0,104
<b>M102B70/B</b>	10	0,104
<b>M102B70/M</b>	10	0,104
<b>M102B70/V</b>	10	0,104
<b>M102B70/A</b>	10	0,104

## MEZZA MANIGLIA ESTRAIBILE IN ALLUMINIO

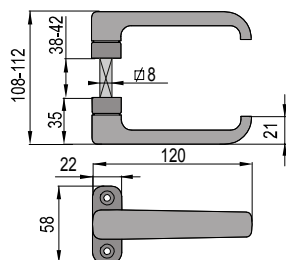


Average slip handle in aluminium.

Demie poignée en aluminium, enfilable.

ART.	Confez. Box	Peso Kg Weight
<b>M102BNE</b>	10	0,088

## MANIGLIA IN ALLUMINIO PER PERSIANE BLINDATE



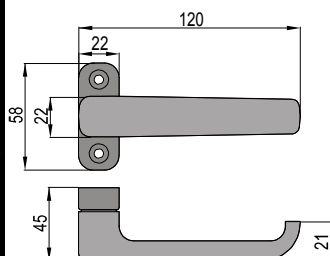
<b>M102BN/2</b>	Verniciata nera Black varnished Verniée noir RAL9005
<b>M102B/2/B</b>	Verniciata bianca White varnished Verniée blanc RAL9010
<b>M102B/2/M</b>	Verniciata marrone Brown varnished Verniée brun RAL8017
<b>M102B/2/V</b>	Verniciata verde Green varnished Verniée vert RAL6005
<b>M102B/2/A</b>	Verniciata argento Silver varnished Verniée argent

Handle in aluminium for armored blinds.

Poignée en aluminium pour persiennes blindées.

ART.	Confez. Box	Peso Kg Weight
<b>M102BN/2</b>	10	0,212
<b>M102B/2/B</b>	10	0,212
<b>M102B/2/M</b>	10	0,212
<b>M102B/2/V</b>	10	0,212
<b>M102B/2/A</b>	10	0,212

## MEZZA MANIGLIA ALTA IN ALLUMINIO PER PERSIANE BLINDATE



Average handle in aluminium for armored blinds.

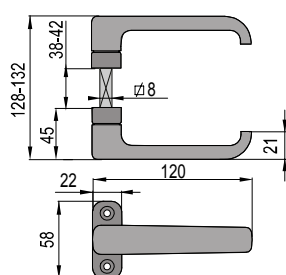
Demie poignée en aluminium pour persiennes blindées.

<b>M102BN80</b>	Verniciata nera Black varnished Verniée noir RAL9005
<b>M102B80/A</b>	Verniciata argento Silver varnished Verniée argent

**NOVITÀ - NEW NOUVEAU**

ART.	Confez. Box	Peso Kg Weight
<b>M102BN80</b>	10	0,104
<b>M102B80/A</b>	10	0,104

## MANIGLIA ALTA IN ALLUMINIO PER PERSIANE BLINDATE



<b>M102BNA/2</b>	Verniciata nera Black varnished Verniée noir RAL9005
<b>M102BA/2/A</b>	Verniciata argento Silver varnished Verniée argent

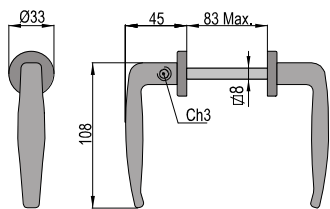
Handle in aluminium for armored blinds.

Poignée en aluminium pour persiennes blindées.

**NOVITÀ - NEW NOUVEAU**

ART.	Confez. Box	Peso Kg Weight
<b>M102BNA/2</b>	10	0,244
<b>M102BA/2/A</b>	10	0,244

## MANIGLIA IN LEGA VERNICIATA NERA CON GRANO

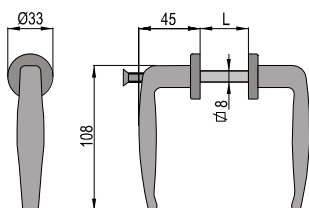


Alloy handle black polished varnished with washers and fixing dowel.

Poignée en alliage verniée noir, avec rondelles et grain de fixation.

ART.	Confez. Box	Peso Kg Weight
M102N	5	0,270

## MANIGLIA IN LEGA VERNICIATA CON VITE



Alloy handle with washers and fixing screw.  
Poignée en alliage avec rondelles et vis de fixation.

ART.-V	Verniciata nera lucida Bright black varnished
ART.-C	Lucida cromata Bright cromated

ART.	L	Confez. Box	Peso Kg Weight
M102/1	25 ÷ 35	5	0,215
M102/2	35 ÷ 45	5	0,230
M102/3	40 ÷ 50	5	0,245
M102/4	50 ÷ 60	5	0,260

**Accessori per persiane blindate.**

**Accessories for armored blinds.**

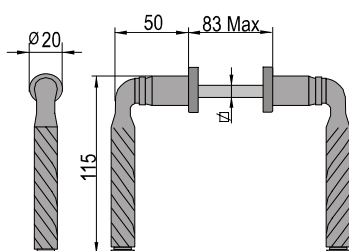
**Accessoires pour persienne blindées.**

Diagram illustrating the installation of various hardware components on a green double-blind door. The components are linked to their respective page numbers:

- Pag. 34
- Pag. 42
- Pag. 109
- Pag. 108
- Pag. 108
- Pag. 108
- Pag. 108
- Pag. 119
- Pag. 63
- Pag. 47
- Pag. 47
- Pag. 118
- Pag. 60
- Pag. 60-61



## MANIGLIA RUSTICA A DOPPIO INTRECCIO VERNICIATA NERA



ART.	Ø
M102RQ7	7
M102RQ8	8

Alloy rustic black handle, double weave, with fixing dowel.

Bequille rustique à double tressage verniée noire avec vis de fixaje

ART.	Confez. Box	Peso Kg Weight
M102RQ7	10	0,160
M102RQ8	10	0,170

## MANIGLIA RUSTICA CON PIGNA VERNICIATA NERA



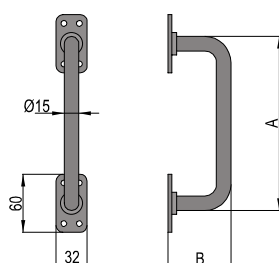
ART.	Ø
M102PQ8	8

Alloy rustic handle with black crown and fixing dowel

Bequille rustique à double tressage verniée noire avec vis de fixaje

ART.	Confez. Box	Peso Kg Weight
M102PQ8	10	0,299

## MANIGLIONE PER PORTONI A 2 CURVE VERNICIATO NERO



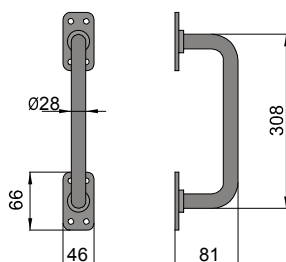
ART.	A	B
MPD/180	180	60
MPD/230	230	60

Gates handle, with 2 curves, black varnished.

Poignée de tirage pour portails, avec 2 courbes, verniée noir.

ART.	Confez. Box	Peso Kg Weight
MPD/180	10	0,420
MPD/230	10	0,480

## MANIGLIONE PER PORTONI A 2 CURVE VERNICIATO NERO

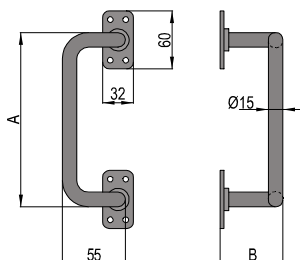


Gates handle, with 2 curves, black varnished.

Poignée de tirage pour portails, avec 2 courbes, verniée noir.

ART.	Confez. Box	Peso Kg Weight
MGD/308	10	0,420

## MANIGLIONE PER PORTONI A 4 CURVE VERNICIATO NERO



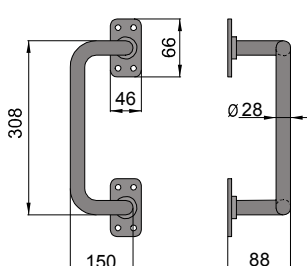
ART.	A	B
MPC/180	180	70
MPC/230	230	70

Gates handle, with 4 curves, black varnished.

Poignée de tirage pour portails, avec 4 courbes, verniée noir.

ART.	Confez. Box	Peso Kg Weight
MPC/180	10	0,560
MPC/230	10	0,640

## MANIGLIONE PER PORTONI A 4 CURVE VERNICIATO NERO

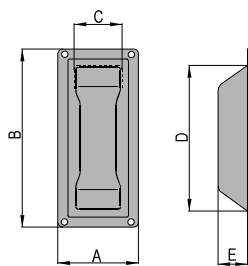


Gates handle, with 4 curves, black varnished.

Poignée de tirage pour portails, avec 4 courbes, verniée noir.

ART.	Confez. Box	Peso Kg Weight
MGC/308	10	0,800

## MANIGLIA DA INCASSO IN ACCIAIO ZINCATO

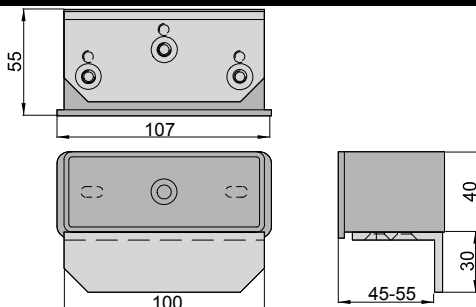


ART.	A	B	C	D	E
MIP	52	115	29	94	21
MID	76	175	41	145	22
MIG	90	200	50	160	22

Embedded handle in zinked steel.  
Poignée à encaisser en acier zingué.

ART.	Confez. Box	Peso Kg Weight
MIP	20	0,060
MID	20	0,200
MIG	30	0,210

## BATTENTE REGOLABILE IN ACCIAIO ZINCATO



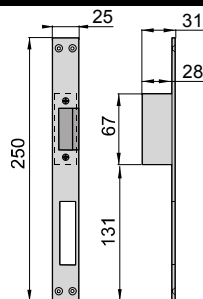
Battente regolabile in acciaio zincato, per elettroserrature.

Adjustable swing in zinked steel, for electric locks.

Battant réglable en acier zingué, pour serrures électriques.

ART.	Confez. Box	Peso Kg Weight
BRE100	16	0,650

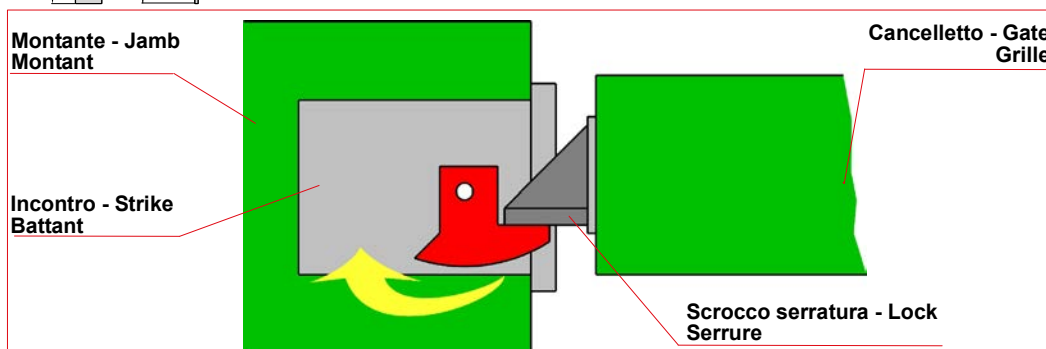
## INCONTRO ELETTRICO APRIPORTA, AMBIDESTRO



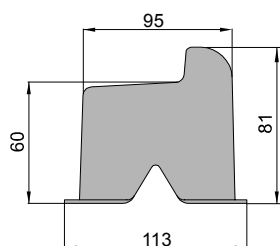
8-12V AC

Electric strike door opener, ambidextrous.  
Rencontre électrique ouvre-porte, ambidextres.

ART.	Confez. Box	Peso Kg Weight
IEL	1	0,270



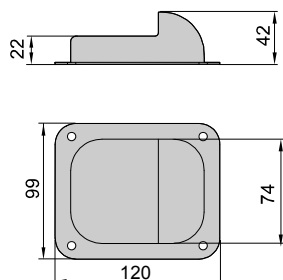
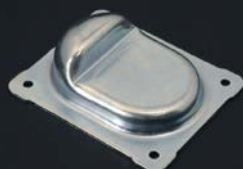
## ARRESTO PER CANCELLI A BATTENTE IN ACCIAIO ZINCATO



Galvanized stop for wing gates.  
Butée zinguée pour grilles à battant.

ART.	Confez. Box	Peso Kg Weight
BA100	16	0,400

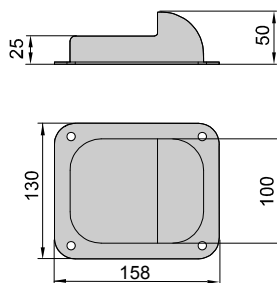
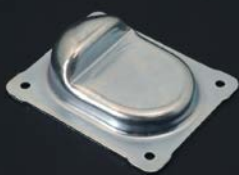
## ARRESTO PER CANCELLI A BATTENTE ZINCATO AD AVITARE



Galvanized stop for wing gates, to be screwed.  
Butée zinguée pour grilles a battant.

ART.	Confez. Box	Peso Kg Weight
BA120F	6	0,286

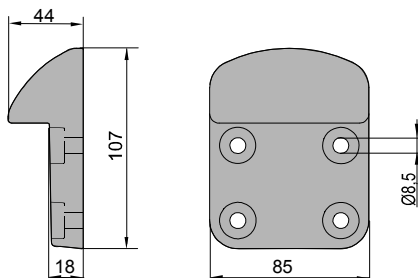
## ARRESTO PER CANCELLI A BATTENTE ZINCATO AD AVVITARE



Galvanized stop for wing gates, to be screwed.  
Butée zinguée pour grilles a battant.

ART.	Confez. Box	Peso Kg Weight
<b>BA160F</b>	6	0,430

## ARRESTO PER CANCELLI A BATTENTE AD AVVITARE

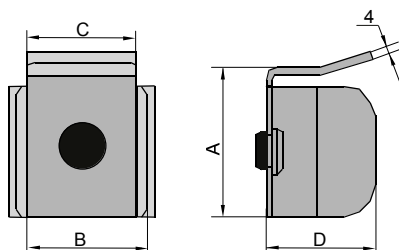


Stop for wing gates, in cast steel, to be screwed.

Butée pour grilles a battant, en acier coule.

ART.	Confez. Box	Peso Kg Weight
<b>BA110F</b>	6	1,050

## BATTENTE DI SICUREZZA PER CANCELLI SCORREVOLI

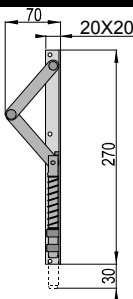


Galvanized security stop for wing gates.

Butée de sécurité zinguée pour grilles a battant.

ART.	A	B	C	D	Confez. Box	Peso Kg Weight
<b>BAS50</b>	59	42	42	45	10	0,420
<b>BAS60</b>	69	60	52	50	10	0,430

## PALETTO A MOLLA AMBIDESTRO



Spring bolt. Application ambidextrous.

Verrou à ressort, en acier inox. Application ambidestre.

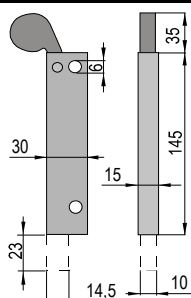
**PIM/Z**  
AD ESAURIMENTO - TO EXHAUSTION  
À ÉPUISEMENT

<b>PIM/Z</b>	Acciaio zincato Zinked steel Acier zingué
<b>PIM</b>	Acciaio inox Stainless steel Acier inox

ART.	Confez. Box	Peso Kg Weight
<b>PIM/Z</b>	12	0,380
<b>PIM</b>	12	0,380

**INOX - STAINLESS**

## PALETTO A MOLLA IN ACCIAIO



Spring bolt. Application ambidextrous.

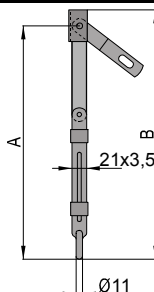
Verrou à ressort, en acier inox. Application ambidestre.

<b>PAM/Z</b>	Acciaio zincato Zinked steel Acier zingué
<b>PAM</b>	Acciaio inox Stainless steel Acier inox

ART.	Confez. Box	Peso Kg Weight
<b>PAM/Z</b>	6	0,380
<b>PAM</b>	6	0,380

**INOX - STAINLESS**

## PALETTO A LEVA MEDIO ZINCATO BIANCO PER CANCELLI



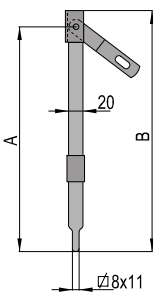
Normal lever sliding bar, in steel, for gates.

Boulin normal à levier en acier, pour grilles.

ART.	A	B	Confez. Box	Peso Kg Weight
<b>PL350</b>	340	365	10	0,300
<b>PL450</b>	440	465	10	0,350
<b>PL600</b>	590	615	10	0,450
<b>PL700</b>	685	705	10	0,500



## PALETTO A LEVA PESANTE ZINCATO PER CANCELLI



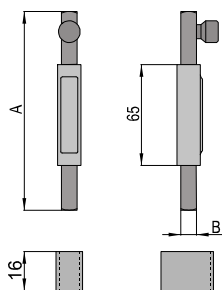
ART.	A	B
PLP500	465	490
PLP700	660	685

Heavy lever sliding bar, zinked, for gates.

Boulin brut à levier en acier, zingue, pour grilles.

ART.	Confez. Box	Peso Kg Weight
PLP500	10	0,670
PLP700	10	0,910

## CATENACCIO VERTICALE LEGGERO A SALDARE ZINCATO



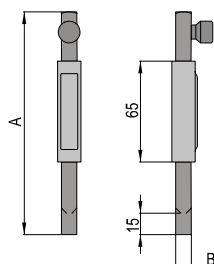
ART.	A	B
CV10/130	130	∅10
CV10/300	300	∅10

Light vertical bolt, to be welded.

Verrou vertical lourd, à souder.

ART.	Confez. Box	Peso Kg Weight
CV10/130	10	0,190
CV10/300	10	0,350

## CATENACCIO VERTICALE LEGGERO A SALDARE ZINCATO



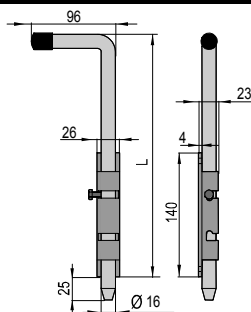
ART.	A	B
CV10/T130	130	∅9
CV10/T300	300	∅9
CV10/T500	500	∅9

Light vertical bolt, to be welded.

Verrou vertical lourd, à souder.

ART.	Confez. Box	Peso Kg Weight
CV10/T130	15	0,145
CV10/T300	15	0,310
CV10/T500	15	0,490

## PALETTO ROTONDO ZINCATO PER CANCELLI, CON SICUREZZA



ART.	L
CV16/300Z	300
CV16/400Z	400
CV16/500Z	500

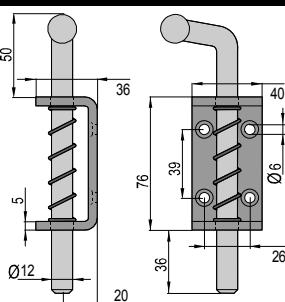
Paletto rotondo, in acciaio zincato, per cancelli, con sicurezza anti apertura.

Round bolt, in zinked steel, for gates, with anti opening pin.

Potelet rond, en acier zingué, pour portails, avec sécurité anti-ouverture.

ART.	Confez. Box	Peso Kg Weight
CV16/300Z	10	0,716
CV16/400Z	10	0,954
CV16/500Z	10	1,193

## PALETTO ROTONDO ZINCATO PER CANCELLI, A MOLLA

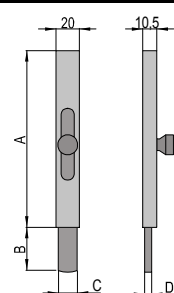


Round bolt, in zinked steel, for gates, with spring.

Potelet rond zingué pour portails, à ressort.

ART.	Confez. Box	Peso Kg Weight
CM12	12	0,350

## CATENACCIO VERTICALE LEGGERO A SALDARE ZINCATO

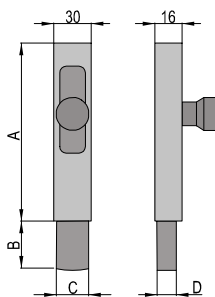
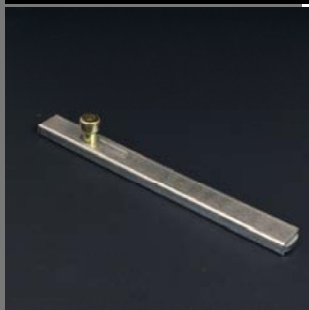


Light vertical bolt, to be welded.

Verrou vertical lourd, à souder.

ART.	A	B	C	D	Confez. Box	Peso Kg Weight
CV616/150	150	50	16	6	10	0,220
CV616/200	200	50	16	6	10	0,260
CV616/250	250	50	16	6	10	0,330
CV616/300	300	50	16	6	10	0,400
CV616/400	400	50	16	6	10	0,520
CV616/500	500	50	16	6	10	0,620

## CATENACCIO VERTICALE PESANTE A SALDARE ZINCATO

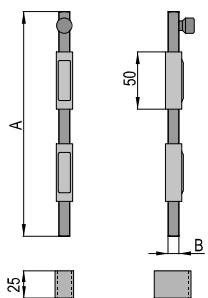


Heavy vertical bolt, to be welded.

Verrou vertical lourd, à souder.

ART.	A	B	C	D	Confez. Box	Peso Kg Weight
CV1025/200	200	40	25	10	10	0,590
CV1025/250	250	45	25	10	10	0,710
CV1025/300	300	45	25	10	10	0,840
CV1025/400	400	45	25	10	10	1,100
CV1025/500	500	79	25	10	10	1,390
CV1025/600	600	50	25	10	5	1,590

## CATENACCIO VERTICALE MEDIO A SALDARE IN ACCIAIO



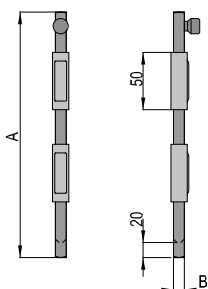
ART.	A	B
CV14/330	300	∅12,5
CV14/660	600	∅12,5

Medium vertical bolt, to be welded.

Verrou vertical type moyen, à souder.

ART.	Confez. Box	Peso Kg Weight
CV14/330	10	0,690
CV14/660	10	1,080

## CATENACCIO VERTICALE MEDIO A SALDARE ZINCATO



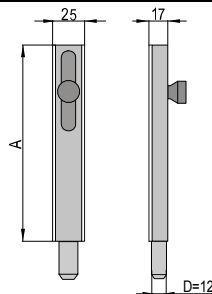
ART.	A	B
CV14/330T	300	∅14
CV14/660T	600	∅14

Medium vertical bolt in zinked steel, to be welded, with round point.

Verrou vertical type moyen, à souder, zingue.

ART.	Confez. Box	Peso Kg Weight
CV14/330T	10	0,640
CV14/660T	10	1,070

## CATENACCIO VERTICALE TONDO A SALDARE ZINCATO

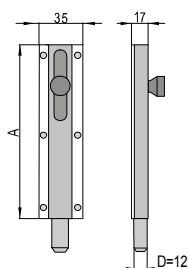


Vertical bolt, in zinked steel, to be welded.

Verrou vertical, à souder, zingue.

ART.	A	Confez. Box	Peso Kg Weight
CVS/T150	150	10	0,306
CVS/T200	200	10	0,373
CVS/T250	250	10	0,393
CVS/T300	300	10	0,473
CVS/T400	400	10	0,506
CVS/T500	500	10	0,586

## CATENACCIO VERTICALE TONDO AD AVVITARE ZINCATO

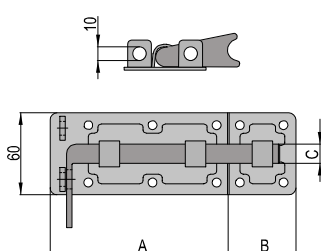


Vertical bolt, in zinked steel, to be fixed.

Verrou vertical, avec trous, zingue.

ART.	A	Confez. Box	Peso Kg Weight
CVF/T150	150	10	0,353
CVF/T200	200	10	0,426
CVF/T250	250	10	0,453
CVF/T300	300	10	0,553
CVF/T400	400	10	0,623
CVF/T500	500	10	0,675

## CATENACCIO PORTALUCCHETTO TRASVERSALE AD AVVITARE



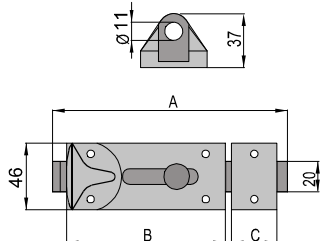
ART.	A	B	C
CT5/180	130	50	∅14
CT5/220	160	60	∅14
CT5/270	185	85	∅14

Light transversal padlock-bolt with holes.

Verrou horizontal léger porte-cadenas.

ART.	Confez. Box	Peso Kg Weight
CT5/180	12	0,400
CT5/220	12	0,500
CT5/270	12	0,600

## CATENACCIO PORTALUCCHETTO TRASVERSALE AD AVVITARE



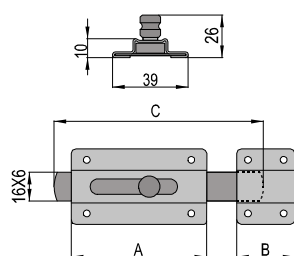
ART.	A	B	C
CT6/150	150	105	31
CT6/200	195	148	31
CT6/250	230	190	31

Light transversal padlock-bolt with holes.

Verrou horizontal léger porte-cadenas.

ART.	Confez. Box	Peso Kg Weight
CT6/150	10	0,290
CT6/200	10	0,340
CT6/250	10	0,400

## CATENACCIO TRASVERSALE PICCOLO ZINCATO



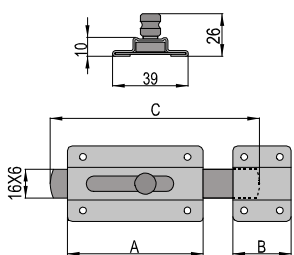
ART.	A	B	C
CT8/Z-50	50	20	70
CT8/Z-70	80	40	108
CT8/Z-90	100	50	150

Little transversal bolt, with holes, in zinked steel.

Verrou horizontal type mignon, avec trous, en acier zingue.

ART.	Confez. Box	Peso Kg Weight
CT8/Z-50	20	0,085
CT8/Z-70	20	0,120
CT8/Z-90	20	0,165

## CATENACCIO TRASVERSALE PICCOLO ACCIAIO VERNICIATO



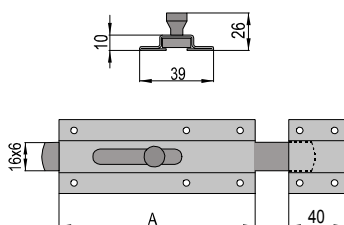
ART.	A	B	C
CT8/B-50	50	20	70
CT8/B-70	80	40	115
CT8/B-90	100	50	150

Little transversal bolt, with holes, in painted steel.

Verrou horizontal type mignon, avec trous, en acier verni.

ART.	Confez. Box	Peso Kg Weight
CT8/B-50	20	0,085
CT8/B-70	20	0,120
CT8/B-90	20	0,165

## CATENACCIO TRASVERSALE GRANDE VERNICIATO



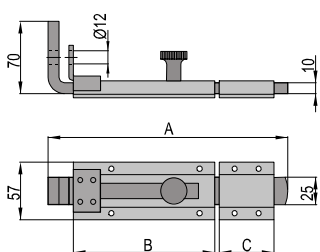
ART.	A	B	C
CT9/B-150	150	10	240
CT9/B-200	200	10	310
CT9/B-300	300	10	450
CT9/B-400	400	10	600
CT9/B-500	500	10	720
CT9/B-700	700	10	1,200

Big transversal bolt, with holes, in painted steel.

Verrou horizontal grand modèle, avec trous, en acier verni.

ART.	A	Confez. Box	Peso Kg Weight
CT9/B-150	150	10	0,240
CT9/B-200	200	10	0,310
CT9/B-300	300	10	0,450
CT9/B-400	400	10	0,600
CT9/B-500	500	10	0,720
CT9/B-700	700	10	1,200

## CATENACCIO PORTALUCCHETTO TRASVERSALE PESANTE



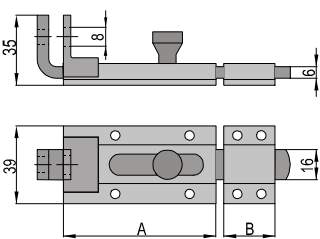
ART.	A	B	C
CT10/Z-200	210	130	50
CT10/Z-300	300	210	80
CT10/Z-400	410	305	90

Heavy transversal padlock-bolt with holes, in zinked steel, with counter-plate.

Verrou horizontal porte-cadenas lourd avec trous, en acier zingué, avec contre-plaque.

ART.	Confez. Box	Peso Kg Weight
CT10/Z-200	5	0,825
CT10/Z-300	5	1,135
CT10/Z-400	5	1,450

## CATENACCIO PORTALUCCHETTO TRASVERSALE LEGGERO



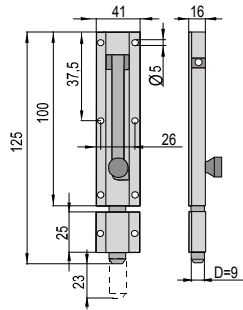
ART.	A	B
CT11/Z-130	80	40
CT11/Z-180	125	40
CT11/Z-250	195	40

Light transversal padlock-bolt with holes, in zinked steel, with counter-plate.

Verrou horizontal léger porte-cadenas, avec trous, en acier zingué, avec contre-plaque.

ART.	Confez. Box	Peso Kg Weight
CT11/Z-130	10	0,220
CT11/Z-180	10	0,290
CT11/Z-250	10	0,400

## CATENACCIO PORTALUCCHETTO VERTICALE AD AVVITARE, IN ACCIAIO



Vertical padlock-bolt, with holes, in steel.

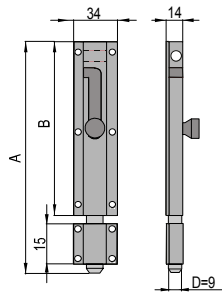
Verrou vertical , porte-cadenas lourd avec trous, en acier.

ART.	Confez. Box	Peso Kg Weight
CV16/120Z	10	0,134

## CATENACCIO PORTALUCCHETTO VERTICALE AD AVVITARE, IN INOX



INOX - STAINLESS



Vertical padlock-bolt, with holes, in stainless steel

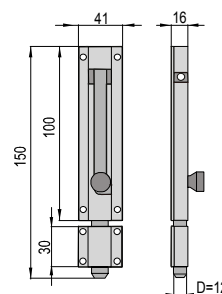
Verrou vertical , porte-cadenas lourd avec trous, en acier inox .

ART.	A	B	Confez. Box	Peso Kg Weight
CV9/50/INOX	70	50	10	0,070
CV9/70/INOX	110	70	10	0,115

## CATENACCIO PORTALUCCHETTO VERTICALE AD AVVITARE, IN INOX



INOX - STAINLESS

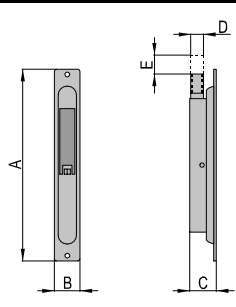


Vertical padlock-bolt, with holes, in stainless steel

Verrou vertical , porte-cadenas lourd avec trous, en acier inox .

ART.	Confez. Box	Peso Kg Weight
CV16/150/INOX	10	0,220

## CATENACCIO DA INCASSO A LEVA A SEMPLICE AZIONE



ART.	A	B	C	D	E
CL16Z	147	16	23	M8	15
CL20Z	152	20	20	M8	15
CL24Z	160	25	20	M8	15

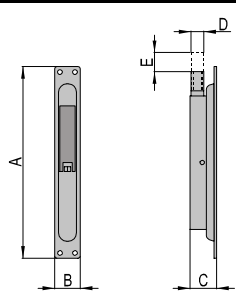
CL16Z	2 fori con leva in acciaio zincato 2 holes with lever in zinked steel
CL20Z	4 fori con leva in acciaio zincato 4 holes with lever in zinked steel
CL24Z	4 fori con leva in acciaio zincato 4 holes with lever in zinked steel

Single-action lever built-in bolt, in zinked steel.

Verrou encastrable à action simple, en acier zingué.

ART.	Confez. Box	Peso Kg Weight
CL16Z	10	0,095
CL20Z	10	0,090
CL24Z	10	0,110

## CATENACCIO DA INCASSO A LEVA A SEMPLICE AZIONE



ART.	A	B	C	D	E
CL16	160	16	19	M8	15
CL20	155	20	22	M8	18
CL24	155	24	22	M8	18

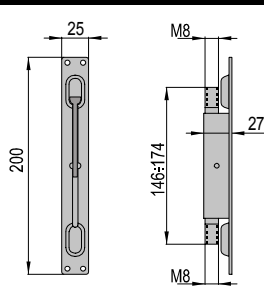
CL16	2 fori con leva in ottone 2 holes with lever in brass
CL20	4 fori con leva in ottone 4 holes with lever in brass
CL24	4 fori con leva in ottone 4 holes with lever in brass

Single-action lever built-in bolt, in zinked steel.

Verrou encastrable à simple action simple, en acier zingué.

ART.	Confez. Box	Peso Kg Weight
CL16	10	0,095
CL20	10	0,145
CL24	10	0,105

## CATENACCIO DA INCASSO A LEVA A DOPPIA AZIONE ZINCATO

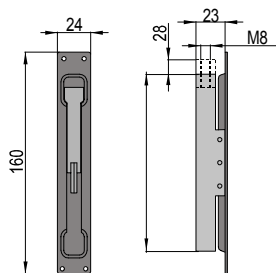


Lever built-in bolt with guide sliding in zinked steel.

Verrou encastrable à levier avec coulissement sur glissières.

ART.	Confez. Box	Peso Kg Weight
CL24ZD/N	10	0,265

## CATENACCIO DA INCASSO A SEMPLICE AZIONE, ZINCATO

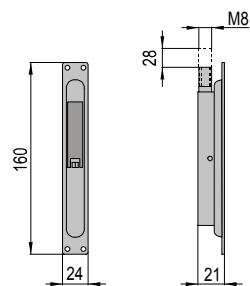


Corsa = 28 mm  
Stroke = 28 mm  
Course = 28 mm

Lever built-in bolt single action, in zinked steel.  
Verrou encastrable à levier, en acier zingué.

ART.	Confez. Box	Peso Kg Weight
CL24ZL	10	0,130

## CATENACCIO DA INCASSO A SEMPLICE AZIONE, VERNICIATO NERO



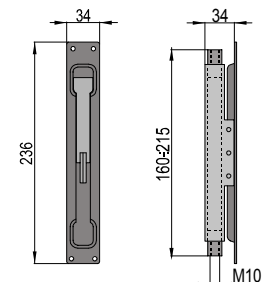
Corsa = 28 mm  
Stroke = 28 mm  
Course = 28 mm

Single-action lever built-in bolt, in zinked steel, black varnished.

Verrou encastrable à action simple, en acier zingué, verniée noir.

ART.	Confez. Box	Peso Kg Weight
CL24N/L	10	0,105

## CATENACCIO DA INCASSO A LEVA PESANTE A DOPPIA AZIONE



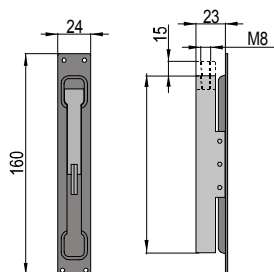
Catenaccio da incasso a leva, pesante, a doppia azione, in acciaio zincato, verniciato nero.

Heavy lever built-in bolt with sliding guide, in zinked steel, black varnished.

Verrou encastrable lourd à levier avec coulissement sur glissières, verinée noir.

ART.	Confez. Box	Peso Kg Weight
CL34	8	0,680

## CATENACCIO DA INCASSO IN ACCIAIO INOX A SEMPLICE AZIONE

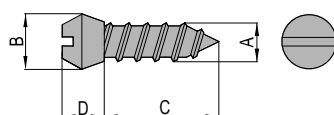


INOX - STAINLESS

Lever built-in bolt in stainless steel.  
Verrou encastrable en acier inox.

ART.	Confez. Box	Peso Kg Weight
CL24/INOX	10	0,116

## VITE AUTOFILETTANTE IMPRONTA A TAGLIO IN ACCIAIO



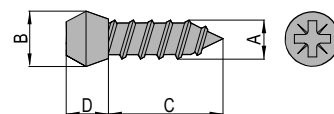
ART.	A	B	C	D
VF/10	4	6	9.5	5.5
VF/12	4.8	7.5	13	5.7

Self threading screw in zinked steel with screwdriver cut.

Vis autoforeuse en acier zingué avec coup à tournevis.

ART.	Confez. Box	Peso Kg Weight
VF/10	1000	0,001
VF/12	1000	0,003

## VITE AUTOFILETTANTE IMPRONTA A CROCE IN ACCIAIO



ART.	A	B	C	D
VFC/10	4	6	9.5	5.5
VFC/12	4.8	7.5	13	5.7

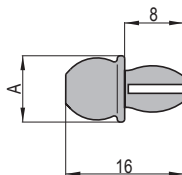
Self threading in zinked steel, with cross impression.

Vis autoforeuse avec empreinte à croix, en acier zingué.

ART.	Confez. Box	Peso Kg Weight
VFC/10	1000	0,001
VFC/12	1000	0,003



## VITE A SCATTO IN NYLON



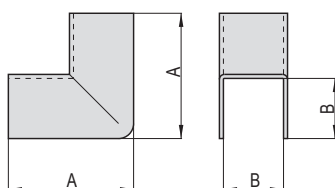
Release screw in nylon.

Clip en nylon.

ART.	A
VN/10	8
VN/12	9

ART.	Confez. Box	Peso Kg Weight
VN/10	1000	0,005
VN/12	1000	0,005

## COPRIANGOLO QUADRO IN ACCIAIO ZINCATO



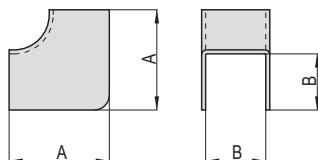
Angle cover in zinked steel.

Couvre angle en acier zingué.

ART.	A	B
CA/10	24	10
CA/12	25	12

ART.	Confez. Box	Peso Kg Weight
CA/10	1000	0,005
CA/12	1000	0,005

## COPRIANGOLO TONDO IN ACCIAIO ZINCATO



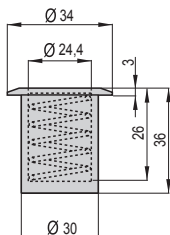
Round angle cover in zinked steel.

Couvre angle rond en acier zingué.

ART.	A	B
CA/10R	18	10
CA/12R	20	12

ART.	Confez. Box	Peso Kg Weight
CA/10R	1000	0,005
CA/12R	1000	0,005

## TAPPO IN PLASTICA, CON MOLLA



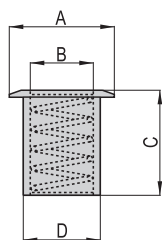
Tappo alloggiamento rostro o paletti, in plastica, con molla.

Cap for safety peg or bolt, in plastic, with spring.

Bouchon logement rostro ou potelets, en plastique, avec ressort.

ART.	Confez. Box	Peso Kg Weight
CAP30N/MOL	50	0,009

## POZZETTO ANTIPOLVERE PER ASTA SERRATURA IN OTTONE



Spring staple against dust for locks, in bright brass.

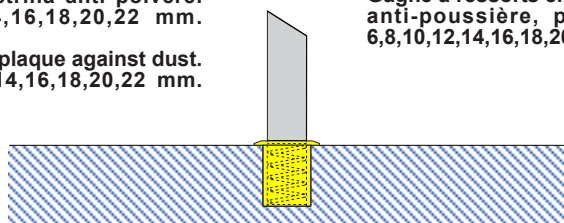
Gache à ressort anti-poussière, en laiton poli pour barres des serrures.

ART.	A	B	C	D	Confez. Box	Peso Kg Weight
PA28/10-6	15	6	30	10	100	0,010
PA28/12-8	18	8	30	12	100	0,014
PA28/14-10	20	10	30	14	100	0,016
PA28/16-12	22	12	30	16	100	0,018
PA28/18-14	24	14	30	18	100	0,022
PA28/20-16	28	16	30	20	50	0,025
PA28/22-18	30	18	31	22	50	0,028
PA28/24-20	32	20	32	24	50	0,030
PA28/25-22	34	22	30	25	50	0,032

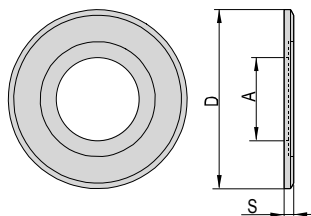
Pozzetti in ottone con piastrina anti polvere. Per aste da 6,8,10,12,14,16,18,20,22 mm.

Spring staples in brass, with plaque against dust. For auctions of 6,8,10,12,14,16,18,20,22 mm.

Gache à ressorts en laiton, avec plaque anti-poussière, pour enclères de 6,8,10,12,14,16,18,20,22 mm.



## RONDELLE COPRIFORO PER POZZETTI ANTIPOLVERE, IN OTTONE



ART.	D	A	S	Cod. Pozzetto
RO/P13	28	12,5	1,5	PA28/12-8
RO/P15	34	14,5	1,5	PA28/14-10
RO/P17	34	16,5	1,5	PA28/16-12
RO/P19	34	18,5	1,5	PA28/18-14

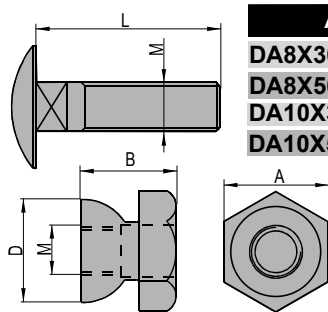
Washers coverhole for sumps, in brass  
Rondelles couvre-trou pour puisards anti-poussière

ART.	Confez. Box	Peso Kg Weight
RO/P13	100	0,005
RO/P15	100	0,008
RO/P17	100	0,006
RO/P19	100	0,006

## DADO ANTIRAPINA CON BULLONE, IN ACCIAIO INOX



INOX - STAINLESS



ART.	A	B	M	L	D
DA8X30T/INOX	17	15,5	M8	30	16,8
DA8X50T/INOX	17	15,5	M8	50	16,8
DA10X30T/INOX	19	15	M10	30	18,7
DA10X50T/INOX	19	15	M10	50	18,7

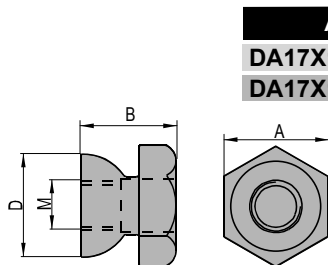
Nut anti-robbery with bolt, in stainless steel.  
Écrou anti-voil avec boulon, en acier inox.

ART.	Confez. Box	Peso Kg Weight
DA8X30T/INOX	300	0,036
DA8X50T/INOX	250	0,044
DA10X30T/INOX	250	0,044
DA10X50T/INOX	200	0,056

## DADO ANTIRAPINA, IN ACCIAIO INOX



INOX - STAINLESS

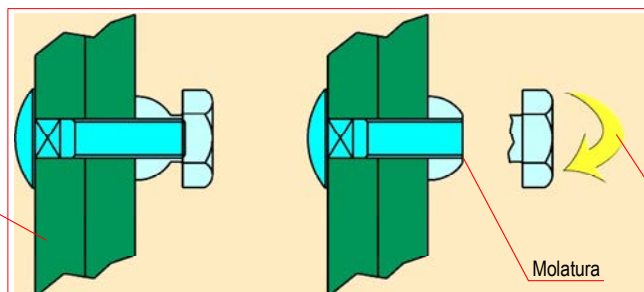


ART.	A	B	M	D
DA17X15,5T/A2	17	15,5	M8	16,8
DA17X15T/A2	17	15	M10	16,8

Nut anti-robbery, in stainless steel.  
Écrou anti-voil, en acier inox.

ART.	Confez. Box	Peso Kg Weight
DA17X15,5T/A2	100	0,017
DA17X15T/A2	100	0,018

Inferriate, recinzioni grigliate  
Crossed, fences  
Grilles, croisées



Avvitando il dado si ottiene la sua separazione ed il bullone non può essere svitato.

By screwing the nut you can obtain its separation and the bolt cannot be unscrewed.

Dévisant l'écrou on obtien sa séparation et le boulon ne peut pas être dévissé.